

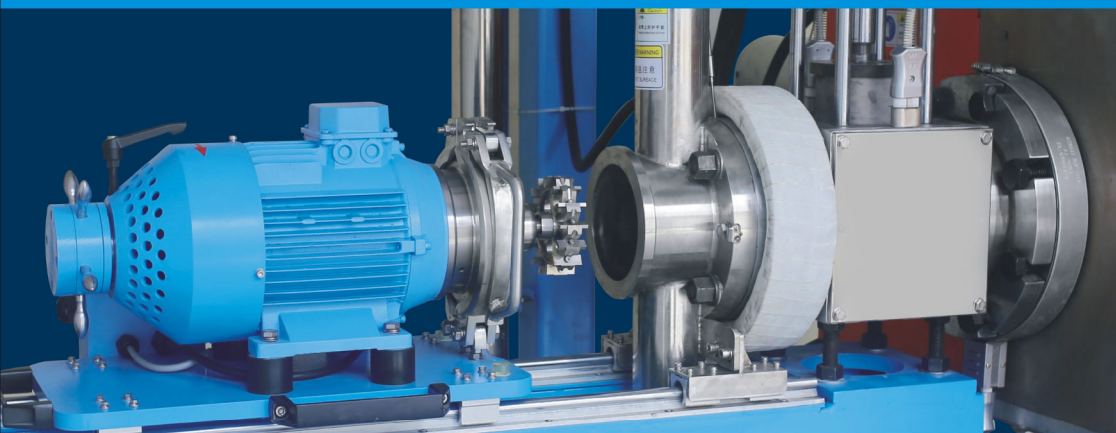
CGC

— 聚诚科技 —



国家高新技术企业
High-Tech Enterprise

智能智造·创新技术体验中心



UWP
水下造粒系统解决方案

聚诚机械®

广东聚诚智能科技有限公司
CGC TECHNOLOGY INTERNATIONAL LIMITED

www.ChinaPelletizer.com

专利资质

CGC®
— 聚诚科技 —



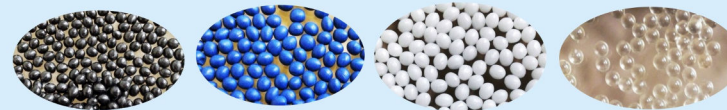
不断创新、提升品质是企业发展的重要路线，聚诚自主研发的产品技术获得多项专利证书：发明专利证书2项，实用新型证书14项，外观专利证书9项，广东高新产品证书6项。

Continuous innovation and quality improvement is an important line for the development of enterprises. The company has obtained many patents and high-tech product certificates 6 patents, 2 invention patents, 14 utility model certificates and 9 appearance patents.

成熟应用：聚合物/通用/工程塑料/填充/色母/改性材料

Mature applications: Polymer/General/Engineering plastics/Filling /Masterbatch/Modified materials

**TPU、TPE、TPR、TPV、EVA、PLA、PBAT、PP、PE
ABS、PS、PPS、PPO、PC、PCL、热熔胶、色母、
填充PET、PBT、POM、PA等食品级和医用级高端环保材料造粒。**



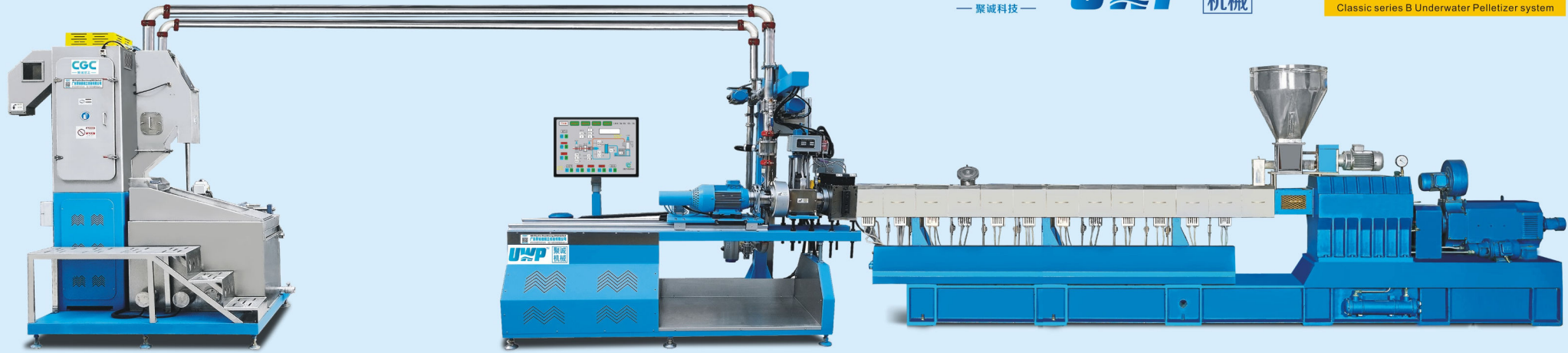
CGC®
—聚诚科技—

UWP

聚诚®
机械

经典B系列聚诚水下切粒机

Classic series B Underwater Pelletizer system



专注、创新、品质、诚信中国水下切粒机

Dedicated, Innovation, Quality, Integrity, Professional
UWP Underwater Pelletizer System in China

环保节能、智能高效、安全稳定、一键开机

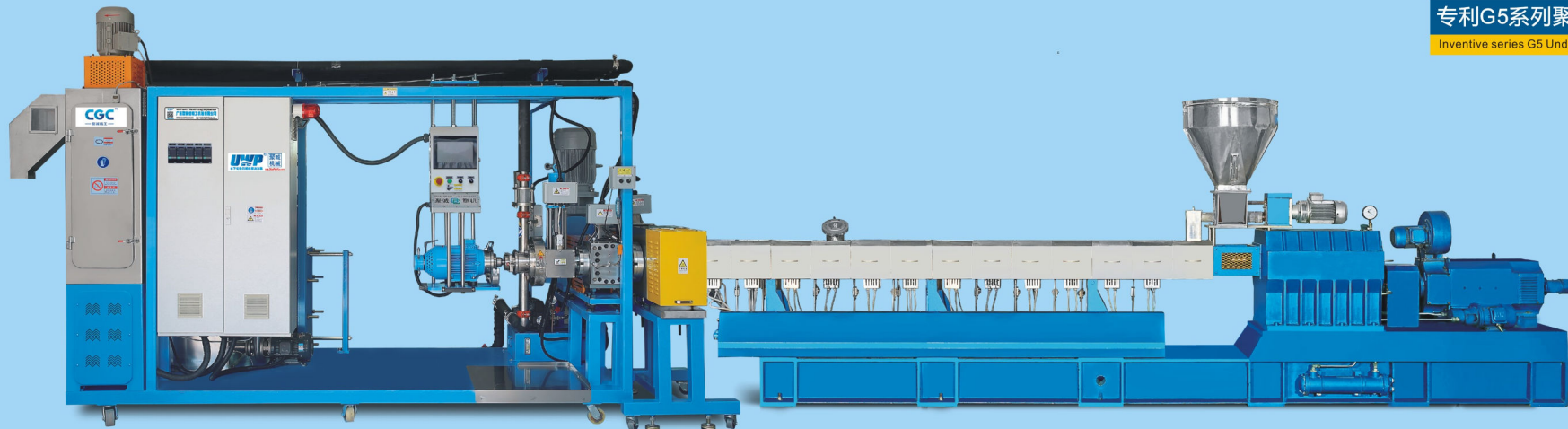
Environmental protection and energy saving, intelligent efficient,
Safe and stable, a key boot

- ▶ 人性化设计，更符合工人操作习惯；
Humanized design, more in line with workers operation habit;
- ▶ 特制模头，保用2年；
Moulding head, warranty 2 years;
- ▶ 切粒均匀，外形美观；
Diced uniform, beautiful appearance;

- ▶ 一键开机，简单快捷；
A key boot, simple and quick;
- ▶ 整机无死角设计，清理方便；
Design the machine no dead Angle, easy to clean;

专利G5系列聚诚水下切粒机

Inventive series G5 Underwater Pelletizer system





水下造粒优点

Advantages Of Underwater Pelletizer

环保干净Pro-environment

智能切粒Smart dicing

高效造粒Efficient granulation

造粒均匀Granulating uniform

简单安全Simple and safe

节省成本Cost savings

聚诚机械，智能智造粒，让造粒更简单

■ 环保智能自动化UWP切粒系统，高效省成本

Environmental protection intelligent automation UWP pelletizing system, cost efficient provinces

■ 高端PLC控制系统，一键开机、安全防护

High-classes PLC control system, a key boot, safe protection

■ 自动合模、高速切粒系统,颗粒均匀美观

Automatic clamping, high speed cutting system, uniform grain is beautiful

■ 模头保修两年, 离心干燥脱水率低2000mg/kg

Die warranty for two years, centrifugal drying dehydration rate low 2000 mg/kg

■ 20年设计使用寿命，设备结实，运行稳定

20 years service life design, super quality, stable operation

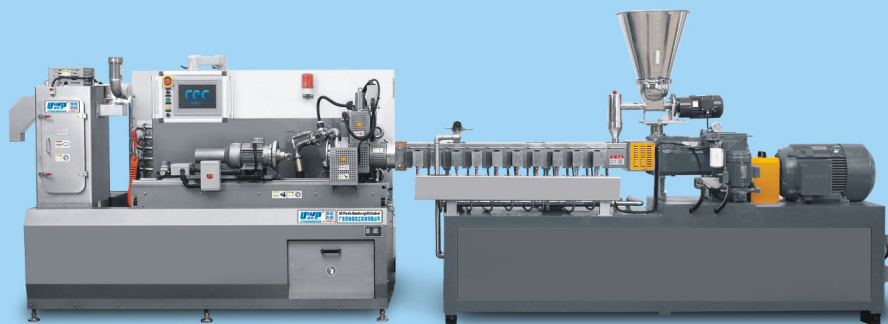
CGC® UWP 聚诚机械

聚诚 G6专利一体机型

Patent series G6

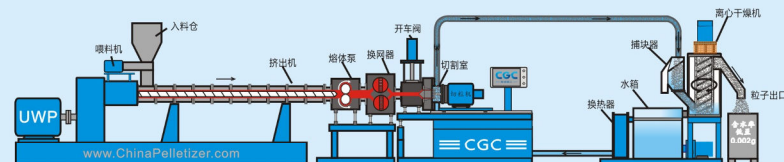
专利G7系列聚诚水下切粒机

Inventive series G7 Underwater Pelletizer system

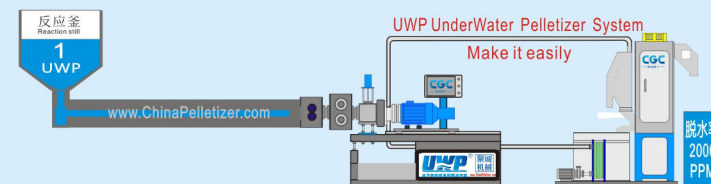


水下切粒机工作原理及示意图

Working principle and schematic diagram of CGC underwater granulator system



聚诚生产配置A: 混料-喂料-挤出机-换网器(熔体泵)-开车阀-切粒机-水系统-离心脱水机-出料-干燥-包装
Production configuration A: Mixing - Feeding - Extruder - Screen changer (Melt pump) - Start valve - Granulator - Water system - Centrifugal dewaterer - Discharge - Drying - Packaging



聚诚生产配置B: 混料-喂料-反应釜-换网器(熔体泵)-开车阀-切粒机-水系统-离心脱水机-出料-干燥-包装
Production configuration B: Mixing - Feeding - Reaction kettle - Screen changer (Melt pump) - Start valve - Granulator - Water system - Centrifugal dewaterer - Discharge - Drying - Packaging

聚合物树脂或塑料从设备A或B:

A. 挤出机喂料机入口喂料进入螺杆混炼

B. 反应釜熔融

► 熔化后通过换网器滤网(可选配熔体泵增加输送速率)从模头挤出树脂到切粒室

► 切刀在装满水的切割室里高速旋转切割树脂为球型颗粒, 颗粒通过水系统输送至离心干燥系统中

► 在离心干燥系统中, 水被排入水箱冷却并循环再用

► 颗粒料则通过离心脱水机去除水份后进入出料口落入接料装置, 通过震动筛等除湿装置后或直接进入料仓后包装。

Polymer resin or plastic material from equipment A or B:

A. Feed from the entrance of the extruder feeder into the screw mixing

B. Melting in the reactor

► After melting, extrude the resin from the die head to the granulating chamber through the screen of the screen changer (melt pump to increase the conveying rate)

► The cutting knife rotates at high speed in the cutting chamber filled with water to cut the resin into spherical particles, which are transported through the water system to the centrifugal drying system.

► In the centrifugal drying system, the water is drained back to the water tank for cooling and recycling.

► The granule material is removed through the centrifugal dewatering machine branch after the water into the outlet into the receiving device, through the vibration screen dehumidifier or directly into the stock for packing.

离心干燥脱水机(专利)

Patented Centrifugal Dryer

低噪音离心机技术
噪音低至70dB



聚诚工厂试料生产线介绍

GC factory trial production line

聚诚测试实验生产线是一般标准的产品生产线配置，其配备的目的是客户通过实验机的现场测试展示，更了解聚诚机械水下造粒机的设备性能及可操作性，同时也是聚诚掌握客户材料特性的重要前提，通过实验机测试后，聚诚机械将会为客户提供材料最适合的造粒解决方案及造粒设备类型。

GC experiment line is standard product line configuration, it is equipped with customers, the purpose of the machine through the experiment of field test show, then to know more about GC underwater granulator equipment performance and maneuverability, and truly grasp customer the important premise of material properties, machine through the experiment testing, GC machinery will provide materials for the customer the most suitable for granulation solution and granulation equipment types.

聚诚实验线的配置为：一套螺杆直径为75mm、L/D=36:1的平行双螺杆挤出机、GC水下切粒系统、工艺水加热系统及冷冻水系统，聚诚实验机能满足所有成型塑胶橡胶原料的造粒测试。

GC experiment line is configured to: a set of screw extruder with diameter of 75 mm, the L/D = 36:1 parallel twin-screw extruder connect with GC under-water pelletizing system, process water heating system and chilled water system, it can meet all granulation test required for plastic and rubber raw materials.



客户案例 Typical Customers



应用塑胶颗粒图

Applicable to polymer and Plastic particles pictures

适用于通用塑胶切粒 Applicable to general plastic pelletizing

非结晶性：TPU, TPE, TPR
EVA, PVC, ABS
PS, PMMA
热熔胶(HMA)
HOT MELT GLUE

结晶性：PE, PP

适用于通用工程塑胶切粒 Applicable to general engineering plastic pelletizing

非结晶性：PC, PPO

结晶性：PET, PBT, POM
PA(尼龙)

适用于高性能工程塑胶切粒 Suitable for high performance engineering plastic pelletizing

非结晶性：PES, PSF, PEI
PAI, PAR

结晶性：PPS, LCP, PEEK
POB, TPI, PPA
PCT, PEN, PEK
PTFE, PTES

换网器

Screen Changer

GCX 系列四网循环式液压换网过滤器

Continuous Screen Changer With Four Plate Circulation

网块单向移动，网块整体易拿下清洁，过滤更精细，清洁更方便

Mesh piece of one-way movement, solid block with clean easily, to filter more delicate, it is more convenient to clean.

设有滤板预热工作和排气结构，换网时料压、料流、料温平稳过渡

Equipped with filter plate preheating work and exhaust structure, change of net pressure, material flow, material temperature stable transition.

特别适用于高透明和高精度制品，如：PE薄膜、TPU薄膜、热熔胶膜等

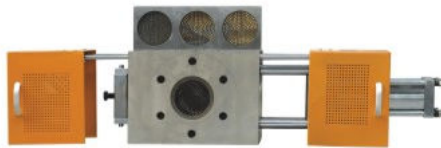
Especially suitable for high transparency and high precision products, such as: PE film, TPU film, hot melt adhesive film, etc

不停机换网，不漏料、不漏油、不断丝，产品无波动。

Non-stop in the net, no leakage, no oil leakage, continuous filament, the product has no volatility

过滤面积直径74mm~204mm

Filter area diameter 74 mm to 204 mm



产品型号 Item number	滤网规格(mm) Screen diameter	产量(kg/hr) Output	加热功率(kw) Power
GCX-70	Ø74	≤250	3.2
GCX-100	Ø104	≤450	4.8
GCX-120	Ø124	≤600	6
GCX-150	Ø154	≤900	7
GCX-200	Ø204	≤1300	13

注：实际产量取决于物料的流动性，过滤精度以及物料纯净度。
Note: the real output depends on the material liquidity, filtration precision and purity of the material.



GCSZ 系列双柱双工位液压换网过滤器

Double-piston Continuous Screen Changer With Double Working Positions

换网时一网工作，一网更换，不中断料流，实现理想的不停机换网

In a net work, change a net, no interruption of material flow, achieve the non-stop in the net.

具有良好的密封性，刚性密封，使用寿命长。

With good sealing, rigid sealing, long service life.

具有充料排气功能，保证换网过程连续

With functions of filling material exhaust, guarantee continuous process to replace the network products.

产品型号 Item number	滤网规格(mm) Screen diameter	产量(kg/hr) Output	加热功率(kw) Power
GCSZ-70	Ø54 X 2	≤250	2.4
GCSZ-90	Ø64 X 2	≤450	3.4
GCSZ-120	Ø94 X 2	≤600	5.2
GCSZ-160	Ø124 X 2	≤900	8
GCSZ-172	176 X 30 (弧形 Arc)	≤1300	8
GCSZ-200	Ø149 X 2	≤1100	10

注：实际产量取决于物料的流动性，过滤精度以及物料纯净度。
Note: the real output depends on the material liquidity, filtration precision and purity of the material.



GCK 系列单板双工位液压换网过滤器

Single-plate Hydraulic Screen Changer with Double Working Positions

采用压力驱动刚性密封技术，防渗漏，延长使用寿命，密封间隙可随使用过程自动补偿

Rigid sealing technology driven by pressure, leakage and prolong service life, can be used along with the process of sealing clearance self-compensation.

满足任何聚合物材料的高温、高压、高产量的生产，可与不同标准的挤出机配合使用

Meet any polymer materials of high temperature and high pressure, high yield of production, can be used with different standard of extruder.

过滤面积直径30mm~360mm

Filter area diameter of 30 mm to 360 mm.

高耐磨、高耐压，高精度的密封结构设计，提高了有效过滤面积及过滤效果

High wear resistance, high pressure, high precision of seal structure design, improve the effective filter area and filtering effect.

产品型号 Item number	滤网规格(mm) Screen diameter	产量(kg/hr) Output	加热功率(kw) Power
GCK-70	Ø74	≤250	3.4
GCK-100	Ø104	≤450	4.4
GCK-130	Ø134	≤600	6.2
GCK-160	Ø164	≤900	6.6
GCK-195	Ø200	≤1300	7.8
GCK-215	Ø220	≤1800	9.4
GCK-260	Ø264	≤2200	12.4
GCK-360	Ø364	≤3200	14

注：实际产量取决于物料的流动性，过滤精度以及物料纯净度。
Note: the real output depends on the material liquidity, filtration precision and purity of the material.

换网器过滤网的用途 Screen Changer Purpose

换网器中的过滤网滤掉原料中的杂质，减少黑点杂质，清洁物料，从而提高产品品质。

Screen changer of filter filter out the impurity in the raw materials, reduce the black spots impurities, cleaning materials, so as to improve product quality.

优质的换网器不仅去杂质帮助提高产品品质，还可以提高产品生产效率，安全生产。

High-quality screen changer to help impurities not only help improve the quality of the products, also can improve the efficiency of production, production safety.

适用于杂质多且脏的回收再生料，过滤清洁效果最好的换网器

Applicable to impurities and dirty recycled reworked material, filtering the best cleaning effect of net

GLCT 滤筒式超大面积过滤器

Double Pillar Screen Changer With Large Filtration Area

超大面积，减少换网频率，提高工作效率。

The large area, reduce the frequency to replace the network, improve the work efficiency.

内置静态混炼器，提高产品稳定性。

The built-in static mixing device, improve the product stability.

内置先后排气结构，提高产品质量。

Built-in successively exhaust structure, improve product quality.

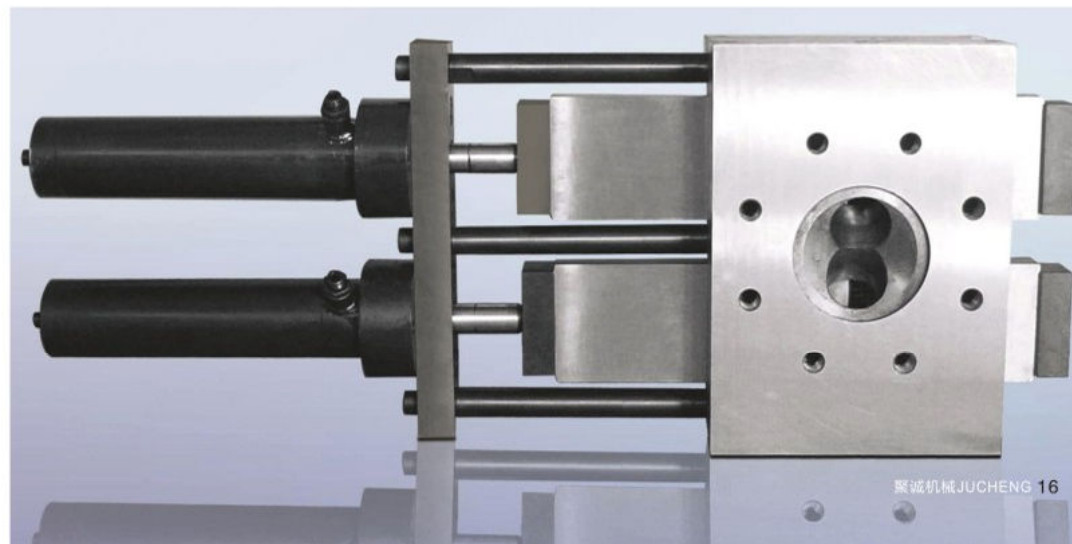
特别适用于PE、PP、PS等塑料熔体，广泛应用于流延膜、片材、管材各种造粒等制品。

Especially suitable for PE, PP, PS and other recycled plastic melt, are widely used in the stretch film, sheet, pipe material of underwater granulation and products.



产品型号 Item number	滤网规格(mm) Screen diameter	产量(kg/hr) Output	加热功率(kw) Power
GLCT-900	Ø900	≤3000	13
GLCT-1000	Ø1000	≤4000	13
GLCT-1125	Ø1125	≤4500	15
GLCT-1335	Ø1335	≤5400	15
GLCT-1650	Ø1650	≤6600	17
GLCT-2200	Ø2200	≤8400	20
GLCT-2827	Ø2827	≤11000	21

注：实际产量取决于物料的流动性，过滤精度以及物料纯净度。
Note: the real output depends on the material liquidity, filtration precision and purity of the material.



HTC系列高温清理机

High temperature automatic cleaning machine

HTC系列高温清理机是聚诚机械公司独家发明研制的一款高端专利清理机为解决热缩性材料、薄膜及粘性大的材料难清理问题量身定制，适用于挤出机螺杆元件、注塑机或薄膜机的过滤网等清理。

HTC series high temperature cleaning machine is GC machinery company exclusive patent invention developed a high-end cleaning machine, to solve the heat shrinkable materials, thin films and viscous material difficult to clean up the problem of customized, suitable for extruder screw components, injection molding machine or film machine filter cleaning, etc.

清理速度快、效率高，短时间内即可将多个过滤网板或者一套螺杆自动清理干净，减少人工操作，节省人工、能源。
Cleaning speed, high efficiency, short period of time can be multiple filter mesh plate or a set of screw automatically clean, reduce the manual operation, manual, energy saving.

安全高效、节约成本，延长过滤网和螺杆组件使用寿命

Safety and efficiency, cost savings, prolong the service life of filter and screw components. 智能电路控制，高温、恒温自动清理，防止滤网或螺杆变形

Intelligent control circuit, high temperature, constant temperature automatic cleaning, prevent mesh or screw deformation.

独立的残料收集器，可将焚烧后留下的塑胶残余料收集到一起，避免设备在使用过程中国残料高温着火

Independent scrap collector, but will leave after burning plastic residual material together, avoid equipment in use process by high temperature remnants of fire

型号 Item Number	HTC-10	HTC-20	HTC-30
整机尺寸 Machine size(mm)	640*450*790	640*900*800	客户订制
炉腔尺寸 Furnace size(mm)	200*180*200	400*180*200	客户订制
功率 Power(KW)	5	8	客户订制
使用温度 temperature(°C)	500	500	500
处理能力 Ability to clean	3~5块 filter plates	6~8块过滤板 filter plates	客户订制



聚诚 EAS 系列微量泵系统

GC Micro Pump System

应用说明 Applications

本添加设备能将配方中占比很小的、几十个PPM的催化剂在外部精确、均匀的加入到反应的聚合物中，加入控制量可以控制在0.01 - 9.99ml/分钟。

This equipment can be very small proportion in the recipe, dozens of PPM and catalyst on the external precisely and even added to the reaction of the polymer, join the control volume can be controlled in 0.01 9.99 ml/min.

如此客户可精准、直观地控制外添加剂加入量，使得聚合物最大程度反应充分，提高产品品质。

So the customer can be precise and intuitive control for the amount of additive, make polymer maximum full reaction, improve the quality of the product.

功能介绍与优点 Function is introduced and the advantages

本系统采用单片机与外围接口芯片组成一个微机处理系统，利用高速数据处理和定时/计数功能，通过程序控制，实现对步进电机的调速和运行状态的控制。

This system adopts single-chip microcomputer and peripheral interface chip to form a computer processing system, the use of high speed data processing and timing/counting function, through the program control, realize the stepping motor speed control and running state of control.

国内首创独家使用非圆齿轮曲柄连杆机构，保证流量计量精度，耐压及平稳性好。

At first exclusive use of non-circular gear crank connecting rod mechanism, ensure accuracy of flow measurement, pressure and stability is good.

机械传动及正驱结构合理有减震降噪措施，噪音极小。

Mechanical transmission and thesis structure reasonable damping control measures, with low noise.

具有压力测量和过压保护、欠压补偿系统。

With pressure measurement and over-voltage protection, under voltage compensation system.

压缩自动补偿程序控制，使泵在高压工作时流量精度保持稳定。

In high pressure pump compression program control, automatic compensation accuracy stable work flow.

温度控制系统，可保持催化剂温度在正常使用范围，即使冬天也能从容应对(可选)。

Temperature control system, can keep the temperature of catalyst in the normal range, even in the winter can cope (optional).

型号 Item number	EAS-A	EAS-B	EAS-C
工作压力 Pressure	0~40 Mpa	0~40 Mpa	0~20 Mpa
流量范围 Flow range	0.01~5ml/min	0.01~9.99ml/min	0.1~20ml/min
重复精度 Repeat accuracy	±1%	±1%	±1%
流量精度 Flow accuracy	±3%	±3%	±3%
温度控制 Temperature control	可选 Optional	可选 Optional	可选 Optional

适用于添加的催化剂：T-9，铋促进剂，钛促进剂等TPU常用催化剂。
Apply to add catalyst: T-9, bismuth and promote media, phthalate promote media such as TPU commonly used catalysts



HRB 系列高温熔体泵

Melt pump

熔体泵工作原理 The working principle of the melt pump

属于正位移泵，工作时依靠主、从动齿轮相互啮合造成工作容积变化来输送熔体。工作容积由泵体、齿轮的齿槽及具有侧板功能的轴承套构成。当齿轮旋转时，熔体即进入吸入腔两齿轮的齿槽中，随着转动，熔体从两侧被带出排出腔，齿轮再度啮合，使齿槽中的熔体被挤出排出腔，压送到出口管道。轴承不能采用通常的润滑油，以避免污染熔体，通常采用熔体自润滑。

Working principle of the melt pump belongs to a positive displacement pump, work rely on the main, driven gear mesh each other cause the working volume change to melt. Working volume by pump body, the gear tooth slot of bearing sleeve and side panel function. When the gear rotates, the melt into the suction chamber two gear tooth, as the rotation, the melt from either side into the discharge chamber, gear meshing, again make tooth melt out of the discharge chamber and pressure to the export pipeline. Bearing can't be used normally lubricating grease, in order to avoid pollution of the melt, usually adopt melt self-lubrication.

熔体泵用途及特点

The purpose and characteristics of the melt pump

适于输送粘度比较高、不含颗粒形杂质的液体。它具有输出压力高、输送介质粘度高、使用温度高、输入口可以为真空、转速调整方便、流量范围大的特点，泵的材质耐高温耐磨、耐腐蚀，有足够的强度和尺寸稳定性。

Suitable for conveying high viscosity, do not contain particles form liquid of impurities. It has a high output pressure, medium to high viscosity, high temperature, input port can adjust the convenient for vacuum, rotational speed, the characteristics of wide flow range. The material of pump heat resistance, wear-resisting, anti-corrosive, have enough strength and dimensional stability.

工艺优势

Technology advantage

- 减轻挤出机压力,由熔体泵建立压力
- 增加产量
- 消除产量变化及压力波动,改善产品质量
- 缩小制造公差,节约原料
- 减少废品
- 共混生产中,保证粒子大小均匀
- Reduce the pressure of extruder, set up by the melt pump pressure
- Increase production
- Eliminate yield change and pressure fluctuation, improve product quality
- Narrowing the manufacturing tolerance, save raw materials
- Reduce the defective goods
- Blending production, ensure uniform particle size



聚诚水下造粒系统配置表

Underwater granulation system configuration list

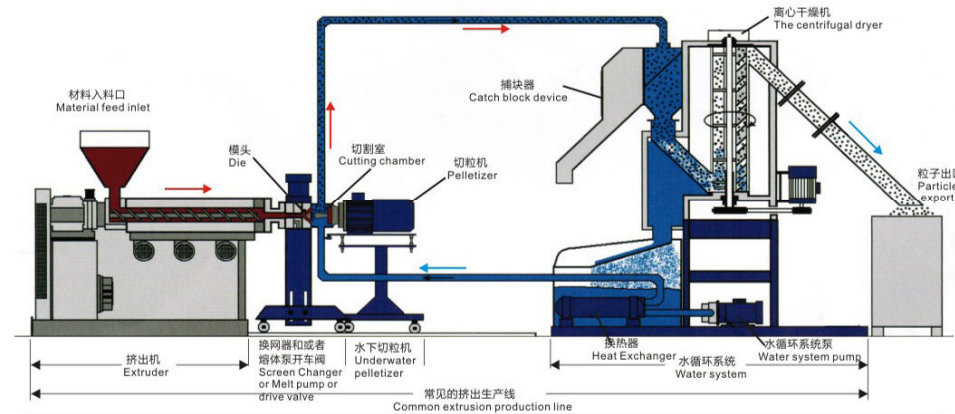
系统部件 Component	系列 Series	A系列 Series A	B系列 Series B	C系列 Series C	E系列 Series E
控制系统 Control system	型号 Item number	QL-A	QL-C	QL-C	QL-E
	产能 Output	100~6000Kg/hr	100~5000Kg/hr	100~3000Kg/hr	50~500Kg/hr
	粒径 Particle diameter	Φ0.6~4.5mm	Φ0.6~4.5mm	Φ0.6~4.5mm	Φ0.6~4.5mm
	电机 Motor	进口专用电机 Import	进口专用电机 Import	进口电机 common	进口电机 common
	转速 RPM	500~5000rpm/min	500~5000rpm/min	500~3000rpm/min	500~3000rpm/min
	进刀方式 Cutting Feed Way	智能自动 Intelligent	手动调整 Hand way	弹簧压力 Spring	弹簧压力 Spring
	误启动保护装置 False start protection device	标准配置 Standard	标准配置 Standard	标准配置 Standard	—
	缠刀警报 Wrap knife alarm	标准配置 Standard	标准配置 Standard	标准配置 Standard	标准配置 Standard
	刀片耗尽警报 Blade out alarm	智能自动 Intelligent	—	—	—
	—	—	—	—	—
机台结构 Machine structure	触摸屏控制 Screen control	标准配置 Standard	—	—	—
	PLC控制 PLC system	标准配置 Standard	标准配置 Standard	普通配置 common	—
	手动控制 Hand way	—	—	—	标准配置 Standard
	工艺管理系统 Process management system	标准配置 Standard	—	—	—
水下切粒机 Underwater Cutting system	机座形式 Support Shape	整体桌式 Table shape	整体桌式 Table shape	标准分段推台式 Standard segmented push bench	简单分段推台式 Simple segmented push bench
	水路系统 Waterway system	水路旁管智能切换 Water pipe intelligent switch by the roadside	水路旁管自动切换 Water pipe automatic switch by the roadside	水路旁管自动切换 Water pipe automatic switch by the roadside	直连式 Direct type
离心干燥系统 centrifugal dryer and water systems	型号 Item number	WS-A	WS-C	WS-C	WS-E
	产量 Output	100~6000kg/hr	100~4000kg/hr	100~2000kg/hr	50~800kg/hr
	电机 Motor	进口西门子 Siemens	西门子 Siemens	西门子 Siemens	国产电机 Chinese
	电机功率 Motor power	4~30KW	4~20KW	4~11KW	1~7.5KW
	内部构造 Inside structure	无死角设计 No dead Angle design	无死角设计 No dead Angle design	通用机型 General models	通用机型 General models
	大块拦截器 Large pieces of the interceptor	高端配置 High Standard	标准配置 Standard	标准配置 Standard	—
	辅助除湿 Dehumidification	高端配置 High Standard	标准配置 Standard	标准配置 Standard	—
	误启动安全装置	智能配置 Intelligent	标准配置 Standard	标准配置 Standard	标准配置 Standard
	堵料报警系统 Plugging alarm system	智能配置 Intelligent	—	—	—
	干燥机自清系统 Dryer self-cleaning system	高端配置 High Standard	—	—	—
	干燥提醒系统 Dryer lighting system	标准配置 Standard	—	—	—
	水箱容量 Water tank capacity	100~1000L	100~600L	100~400L	100~200L
	水温控制 Temperature control	智能配置 Intelligent	自动控制 Automatic	自动控制 Automatic	手动控制 Hand way
	加热功率 Heating power	8~50KW	8~20KW	4~10KW	4~8KW
	加热器 Heater way	隐蔽式加热 Hidden heating	隐蔽式加热 Hidden heating	隐蔽式加热 Hidden heating	普通加热管 Ordinary heating tube
	水泵 Water pump	高品质进口不锈钢水泵 Import, stainless steel	台湾不锈钢水泵 Taiwan, stainless steel	国产普通水泵 Domestic, ordinary	国产普通水泵 Domestic, ordinary
	工艺水流量 Process flow	10~200m³/hr	18~80m³/hr	18~40m³/hr	10~20m³/hr
	换热器 Heat exchanger	高品质不锈钢板式 Plate-type, high stainless steel	SUS304不锈钢板式 Plate-type, stainless steel	普通不锈钢板式 Plate-type, stainless steel	普通壳管式 Ordinary shell, tube type
	管道夜视 Pipeline night vision	可选 Selectable	—	—	—



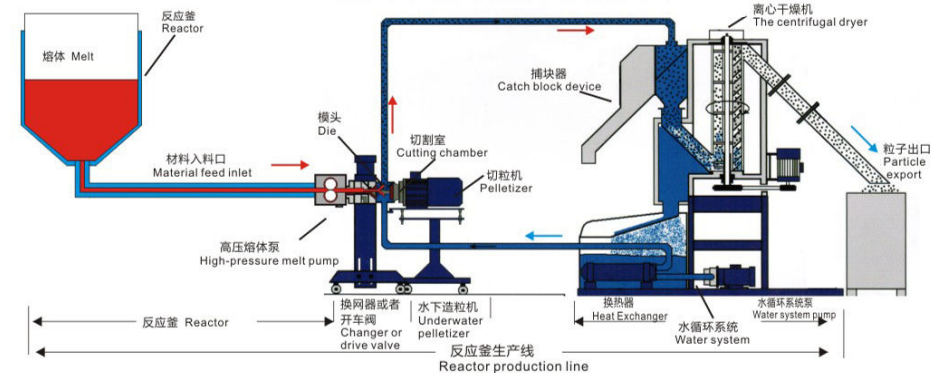
水下造粒系统生产工艺及原理介绍

Underwater granulation system production process and principle

螺杆挤出机式水下造粒工艺流程图



反应釜式水下造粒工艺流程图



聚诚团队

聚诚机械，拥有来自五湖四海的专业人才，他们正直善良、敬业爱岗、谦虚学习、团结协作，为的就是让我们的产品更好，让用户爱上聚诚造，让造粒更简单，我们的团队会更加用心，为用户创造更大的价值！关注聚诚，持续改进！创造美好生活！

CGC machinery, with professional talents from all over the world, they are honest and kind, dedication, modest learning, unity and cooperation, is to make our products better, so that users fall in love with jucheng. Let granulation more simple, our team will be more careful, for the user to create greater value! Focus on jucheng, continuous improvement! Create a better life!



加工中心

聚诚公司的生产加工设备先进、加工制造能力强，拥有先进精密的数控车床、铣床、磨床、钻床、焊机制造设备。月生产能力约二十条，年销售设备上百套。

CGC has advanced production equipments, strong ability in processing and manufacturing, with advanced precision CNC lathes, milling machine, grinding machine, drilling machine, welding machine, such as manufacturing equipment.



品牌合作商

SIEMENS

Schneider Electric
施耐德电气

DELTA

RKC

MITSUBISHI

富士电机
Fuji Electric

ABB



聚诚机械采用高端配置，用材厚重结实，选用知名国际品牌原材料，要求高，把关严，执行ISO9001.2015质量体系标准，坚持“品质第一”的原则，用好材，是做好设备的首要基础。

CGC products adopt high-end configuration, choose well-known international brands of raw materials with stable quality, also execute ISO9001.2015 quality system standards, to gather the high demand, high standards of product.



客户案例



UWP水下造粒机专业制造商 Chinese Professional Manufacturers of Underwater Granulator Machine

专注创新 品质第一 诚信服务

广东聚诚智能科技有限公司，始创于2010年5月，位于广东省东莞市常平镇，两个厂区，厂房面积6千余平方，毗邻华南四大塑胶市场。聚诚是一家拥有高新技术的国家级高新技术企业，遵守ISO9001品质标准，专注技术创新，以人才为根本，拥有硕士研究生等专业人士，国家发明、实用新型专利证书二十余项、广东省高新技术产品六项，现为华南理工大学研究生实习基地、产学研合作单位。

CGC TECHNOLOGY INTERNATIONAL GUANGDONG LIMITED, founded in May 2010, is located in changping town, dongguan city, guangdong province, with two factories covering an area of about 6,000 square meters and adjacent to the four major plastic markets in south China. Cheng is a national high-tech enterprise with high and new technology, abide by the ISO9001 quality standards, focus on technological innovation, with talent as a fundamental, has a master's graduate students and other professional talents, technology certificate of more than 20 national invention, utility patents, six guangdong province high and new technology products, is now south China university of technology graduate students practice base, the industry-university-institute cooperation unit.



聚诚以研发设计制造橡塑材料生产设备为主，生产：环保智能自动化水下造粒机、水下切粒机、水下造粒机、切粒机、换网器、熔体泵等挤出造粒生产线及相关配件。公司秉承“专注创新、品质第一、诚信服务”的理念，精益求精，注重客户的体验和需要，用心做好每一个细节。

CGC mainly focuses on r&d, design and manufacturing of rubber and plastic material production equipment. Production: environmental intelligent automatic underwater granulator, underwater pelletizer, granulator, mesh changer, melt pump and other extrusion granulator production lines and related accessories. Adhering to the concept of "focus on innovation, quality first, sincere service", the company strives for excellence, pays attention to customer experience and needs, and does every detail well.

广东聚诚智能科技有限公司 CGC TECHNOLOGY INTERNATIONAL LIMITED

华南理工大学研究生实习基地 中国聚氨酯工业协会 理事单位
深圳市高分子行业协会 副会长单位 广东省塑胶行业协会 副会长单位
广西塑料行业协会 常务理事单位 中塑协技术协作委员会 会员单位
中国塑料机械工业协会 理事单位 常平工商联理事单位



工厂地址：广东省东莞市常平镇漱新工业区
电话：+86-769-83060018
销售热线：+86 13829180058 13538516728
传真：+86-769-83033927
邮箱：info@ChinaPelletizer.com
13829180058@163.com
网址：www.ChinaPelletizer.com

Factory: Shuxin Village, ChangPing Town, Dongguan City,
GuangDong Province, China 523560
TEL: +86-769-83060018 FAX: +86-769-83033927
PHN: +86-13829180058 13538516728
BOX: info@ChinaPelletizer.com
13829180058@163.com
WEB: www.ChinaPelletizer.com